

TOURISM DRIVEN MSME GROWTH IN UTTARAKHAND: A VALUE CHAIN

Dr. Vineeta Mehta

Assistant Professor

Department of Economics

L.S.M. Campus Pithoragarh

Email: vineetamehta@gmail.com

Abstract

The tourism industry has emerged as a significant force behind the economic development of Uttarakhand. It has been instrumental in promoting the expansion of Micro, Small, and Medium Enterprises (MSMEs) in a variety of industries, including hospitality, handicrafts, transportation, and agricultural goods. Using a value chain approach, this research investigates the interrelationships that exist between tourism and the growth of micro, small, and medium-sized enterprises (MSMEs). It investigates the ways in which the demand for tourism encourages the establishment of local businesses, the formation of job opportunities, and the growth of the area, all while recognising structural difficulties in the value chain. The suggestions for public policy that are included in the study's conclusion are intended to improve inclusive growth, competitiveness, and sustainability.

Keywords

Tourism, Value chain, Enterprises, Tourist industry, Growth.

Reference to this paper should
be made as follows:

Received: 18-09-25

Approved: 26-09-25

Dr. Vineeta Mehta

*TOURISM DRIVEN MSME GROWTH
IN UTTARAKHAND: A VALUE CHAIN*

Article No.58

RJPSS Apr.25-Sept.25, 2025

Vol. L No. 2, Pg. 489-499

Similarity Check - 04%

Online available at:

[https://anubooks.com/journal-
volume/rjpss-2025-vol-l-no-2-sept](https://anubooks.com/journal-volume/rjpss-2025-vol-l-no-2-sept)

[https://doi.org/10.31995/
rjpss.2025.v50i02.058](https://doi.org/10.31995/rjpss.2025.v50i02.058)

Introduction

The expansion of micro, small, and medium-sized enterprises (MSMEs) in Uttarakhand is driven by tourism, which represents a dynamic interaction between natural resource endowments, cultural legacy, and local economic activity. All of these elements are interrelated via a framework of a value chain. Uttarakhand, which is situated in the Himalayan area of India, is blessed with a wide variety of tourist assets, which include places of pilgrimage and hill stations, as well as wildlife reserves and adventure tourism centers. As a result of this diversity, there is a consistent flow of demand for a wide variety of products and services, the majority of which are provided by Micro, Small, and Medium Enterprises (MSMEs). In order to have a better knowledge of how tourism demand is converted into economic possibilities for these businesses, the value chain method is used. This technique involves mapping the sequence of actions that are involved, beginning with the supply of inputs and manufacturing and ending with the delivery of services and consumption by visitors. Local communities are at the center of this value chain. Their engagement guarantees that the advantages of tourism are dispersed throughout many sectors of the economy, which would not be possible without their involvement. The input suppliers in Uttarakhand are the first link in the tourist value chain. These suppliers provide the key raw materials and resources that are necessary for the provision of tourism-related services. A few examples of these include agricultural producers that provide hotels and restaurants with food grains, vegetables, and dairy products, as well as craftsmen who create handicrafts and souvenirs that represent the cultural uniqueness of the area. Because they make it possible for downstream services to operate, micro, small, and medium-sized enterprises (MSMEs) that participate in these upstream activities constitute the basis of the tourist economy. Production and service provision constitute the subsequent stage, during which micro, small, and medium-sized enterprises (MSMEs) operate in industries such as hotel, transportation, food processing, and guide services. When it comes to providing travellers with experiences, small hotels, homestays, guesthouses, and tour operators play an important role. These establishments often combine traditional skills and expertise with contemporary business strategies. Not only do these businesses bring in revenue for their proprietors, but they also provide job possibilities for the people who live in the surrounding area, therefore enhancing the standard of living in rural areas.

In the next step of the value chain, distribution and marketing systems link micro, small, and medium-sized enterprises (MSMEs) with visitors. Through the promotion of locations and services, travel agencies, internet booking platforms, and tour operators make it easier to get access to their respective markets. Many micro, small, and medium-sized enterprises (MSMEs) in Uttarakhand continue to depend on conventional marketing methods and word-of-mouth exposure, which

restricts their reach. An opportunity to integrate micro, small, and medium-sized enterprises (MSMEs) into larger markets is presented by the growing prevalence of digital technology. This will enable MSMEs to attract visitors from both inside the country and from other countries. During the last step of the value chain, consuming takes place. This is the stage when visitors make purchases of products and services, which results in income that is then sent back down the chain. The revenue that is made by micro, small, and medium-sized enterprises (MSMEs) is then reinvested in the local economy, which stimulates more economic activity. This cyclical process provides a multiplier effect. When it comes to the economic, social, and regional aspects, the influence of the expansion of micro, small, and medium-sized enterprises (MSMEs) in Uttarakhand is clear. When it comes to the economy, tourism is a strong engine of development since it generates demand for a wide variety of things, including services and goods. As a result of increasing revenue, company development, and job creation, micro, small, and medium-sized enterprises (MSMEs) are a significant contribution to the economy of the state. On a social level, tourism encourages community engagement and empowerment, especially among women and members of marginalised groups who participate in small-scale businesses such as homestays, food services, and handicrafts. Additionally, it contributes to the preservation of local customs and cultural heritage, which are becoming increasingly important to the visitor experience. Tourism, when seen from the viewpoint of regional development, supports the development of infrastructure and services in regions that are distant and undeveloped. This, in turn, helps to reduce regional imbalances and promote balanced growth. The tourism–MSME value chain in Uttarakhand is confronted with a number of obstacles that prevent it from reaching its full potential, despite the fact that it makes considerable contributions. The limits imposed by the infrastructure, such as inadequate connection and restricted access to fundamental services, lead to a rise in operating expenses and a decrease in efficiency. Growth and modernisation of micro, small, and medium-sized enterprises (MSMEs) are hampered by a number of financial obstacles, including restricted access to credit and reliance on informal finance. For many businesses, gaining entry to the market continues to be a significant challenge since they lack the expertise and resources necessary for successful branding and digital marketing. It is also important to note that the seasonal nature of tourism results in swings in revenue, which may have a negative impact on the viability of small enterprises. In particular, the fragile ecology of the Himalayas is especially vulnerable to environmental issues such as overtourism and ecological degradation, which represent significant dangers to the tourism industry's capacity to remain profitable over the long term.

A strategy that is both broad and integrative is necessary in order to solve these difficulties and ensure that the tourism–MSME value chain is strengthened.

When it comes to enhancing accessibility and operational efficiency, it is very necessary to make investments in infrastructure, which includes roads, digital connections, and fundamental services. It is possible to assist the development and innovation of micro, small, and medium-sized enterprises (MSMEs) by simplifying processes and implementing targeted programs to improve access to financing. In order to enhance both the quality of service and the competitiveness of an organization, capacity-building initiatives, such as skill development programs in hospitality, marketing, and entrepreneurship, may be implemented. Fostering environmentally responsible tourist activities, such as ecotourism and community-based tourism, may contribute to achieving a balance between economic expansion and the preservation of the natural environment. Utilising digital technology to establish online platforms and networks may also help micro, small, and medium-sized enterprises (MSMEs) increase their market access and exposure. When the development of micro, small, and medium-sized enterprises (MSMEs) in Uttarakhand is analysed through the lens of the value chain, a complicated but very promising system of economic connections is revealed. Not only does tourism result in the generation of direct cash, but it also encourages a wide variety of associated activities that contribute to the growth of the local community. Through the provision of necessary products and services, the creation of job opportunities, and the promotion of innovation, micro, small, and medium-sized enterprises (MSMEs) play a pivotal role in this ecosystem. The value chain can be made more efficient and sustainable by strategic interventions and policy support, which may ensure that tourism continues to serve as a catalyst for inclusive and long-term development in Uttarakhand. Despite the fact that problems still exist, these interventions and support can be implemented.

Tourism Sector in Uttarakhand

One of the most significant pillars around which the economy of Uttarakhand is built is the tourism sector which is located in the state. It is powered by a unique combination of the natural beauty, the spiritual significance, and the opportunities for adventure that it offers. Each year, the state, which is situated in India and is encircled by the Himalayas, is visited by millions of tourists from all over the globe as well as millions of people from India. Generally speaking, the landscape of tourism in this area may be broken down into four distinct categories: ecotourism, adventure tourism, leisure tourism, and pilgrimage tourism. Every year, a substantial number of devotees visit holy sites like the Char Dham circuit, which consists of Yamunotri, Gangotri, Kedarnath, and Badrinath. These holy sites are considered to be among the holiest in spirituality. One of the most important sources of income for this industry is pilgrimage tourism. This periodic but intense flood of tourists generates an immense demand for services such as transportation, accommodation, food supply, and local guides, which in turn has a significant multiplier effect on the economy of

the town in which the visitors are staying. Hill stations like Nainital, Mussoorie, and Almora are not only well-known for their religious tourism, but they are also among the most popular leisure destinations in the area. This is especially true during the summer months, when they provide refuge from the oppressive heat of the plains of the region. Additionally contributing to the growth of ecotourism is the state's impressively high biodiversity as well as its extensive forest reserves. Many people who are interested in wildlife and researchers visit national parks like Jim Corbett National Park. These parks are popular locations for these types of people. The government has, over the course of a number of years, adopted preventative steps to promote ecologically responsible tourism activities. This is done with the intention of protecting fragile alpine habitats while simultaneously maintaining economic growth. In addition, the development of infrastructure, which includes the connection of highways, the supply of digital services, and the strengthening of hospitality standards, has contributed to the continued enhancement of the tourism business. The accessibility and structure of the industry have both improved as a result of this. On the other hand, the sector is challenged with a variety of problems, including seasonal overcrowding, environmental degradation, and inadequate infrastructure in faraway regions. Both careful planning and involvement on the part of government authorities are required to address these difficulties.

Among the several types of tourism that are seeing significant growth in Uttarakhand is the adventure tourism sector. Consequently, this has led to a significant diversification of the state's tourism portfolio, which in turn has contributed to economic activity throughout the whole year. Engaging in sports such as climbing, skiing, paragliding, river rafting, and hiking is appealing to a younger generation of tourists who are interested in experiencing travel. These sites, such as Rishikesh, have gained international recognition as hubs for white-water rafting and yoga tourism as a consequence of their ability to mix the elements of adventure and wellness. The dependence on pilgrimage tourism alone has been reduced as a direct consequence of this diversification, and the development of specialist sectors such as wellness retreats, homestays, and rural tourism has been encouraged as a result of this. There are thousands of individuals whose lives are supported, both directly and indirectly, by the tourism business, which also plays a vital role in the establishment of work opportunities. This is especially true in hilly and rural settings, where there are fewer opportunities for industrial production but more opportunities for agriculture. There are a number of different ways in which local communities have the potential to benefit from the inclusion of small businesses in the tourism value chain. Handicrafts, culinary services, and guiding services are a few examples of the types of enterprises that fall under this category. To further increase community involvement, the government has implemented programs and policies that aim to boost homestays and local businesses.

This has resulted in the achievement of further improving community engagement. It is as a consequence of this that the distribution of economic benefits has become more egalitarian. In order to ensure that it will continue to be profitable over the long term, the sector has to confront significant difficulties such as the consequences of climate change, the management of waste, and the limitations on carrying capacity. Despite the fact that the industry has the capacity to increase in size, this is the situation. Engaging in strategic planning, making investments in environmentally friendly infrastructure, and putting talent development efforts into action are all essential steps that must be taken in order to improve the quality of services provided and the global competitiveness of the organization. The tourism business in Uttarakhand is not only a source of economic activity, but also a comprehensive development engine that has an effect on issues pertaining to the environment, culture, and society simultaneously. As a consequence of this, it is a crucial sector for the continued viability of the state in the future.

Impact of Tourism on Msme Growth in Uttarakhand

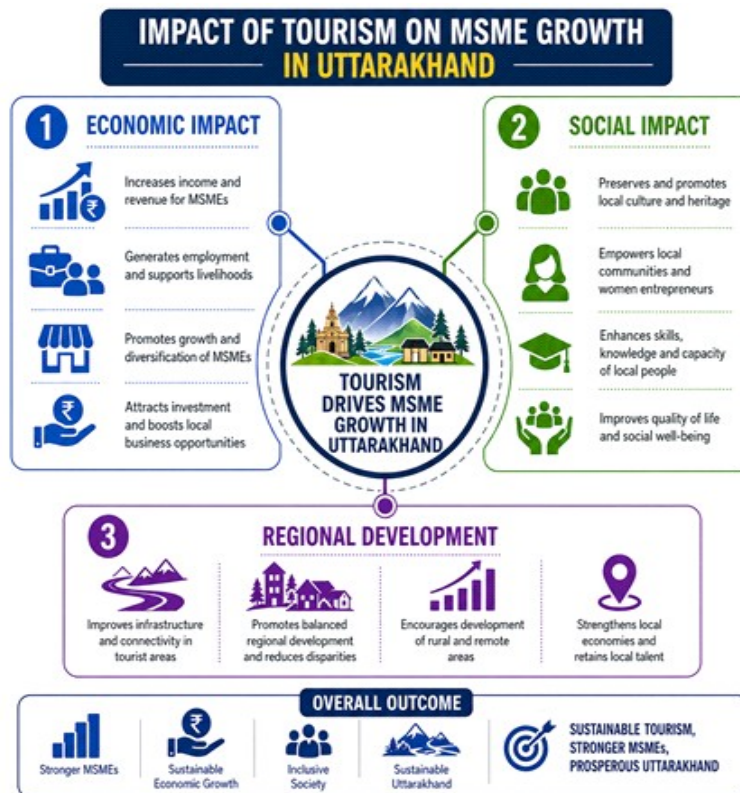


Figure 1: Impact Of Tourism on MSME Growth in Uttarakhand

1. Economic Impact

There is a significant economic influence that tourism has on the development and expansion of micro, small, and medium-sized enterprises (MSMEs) in Uttarakhand. The consistent inflow of visitors results in a high demand for a variety of goods and services, including lodging, food, transportation, and local products. This, in turn, creates a multitude of chances for locally owned and operated businesses to expand their operations. Because of this need, businesses such as hotels, homestays, travel agencies, restaurants, and handicraft units are encouraged to open their doors. These establishments all contribute to the production of revenue and the development of job opportunities. Both direct revenues and indirect links within the tourist value chain, such as the provision of agricultural goods, local crafts, and support services, are both beneficial to micro, small, and medium-sized enterprises (MSMEs). Additionally, tourism encourages the diversification of rural economies, which in turn reduces the dependencies of rural communities on traditional industries such as agriculture. MSMEs, on the other hand, have difficulties in maintaining financial stability due to the fact that tourism is a seasonal industry, which may result in variations in revenue.

2. Social Impact

The increase of micro, small, and medium-sized enterprises (MSMEs) spurred by tourism has substantial societal ramifications, especially in the country's hilly and rural areas. Local communities are allowed to engage in livelihood activities, which contribute to the alleviation of poverty and discourage migration to metropolitan regions. Women, in particular, stand to gain from participation in homestays, handicrafts, and small-scale food businesses, which ultimately result in improved financial independence and empowerment. Furthermore, tourism is a driving force behind the preservation and development of local culture, customs, and crafts, since these elements become significant assets for the purpose of attracting tourists. Interacting with visitors not only allows for more cultural exchange but also broadens the viewpoint of the communities that are being visited. On the other hand, fast expansion in tourism may occasionally result in the commercialisation of culture and disturbance of social order if it is not regulated correctly.

3. Regional Development

There is a correlation between tourism and balanced regional development in Uttarakhand. Tourism is responsible for bringing economic activity to places that are distant and undeveloped. Upgrades in infrastructure, such as roads, transportation, communication networks, and public utilities, are made possible as a result of the need to support tourism. These upgrades are beneficial to both visitors and the people of the surrounding area. By establishing companies in rural and semi-urban regions, micro, small, and medium-sized enterprises (MSMEs) play a crucial part in this

process, which in turn decentralises economic development. Tourism not only promotes equitable growth throughout the state’s many areas, but it also supports the creation of new destinations that go beyond the conventional hotspots that have been established. However, regional differences may be caused by uneven growth and an excessive concentration of visitors in some places. This highlights the need for the implementation of tourism plans that are both planned and sustainable.

Challenges in the Tourism-Msme Value Chain

1. Infrastructure Constraints

A lack of suitable infrastructure is one of the most critical hurdles in the tourism–MSME value chain. This is especially true in the more rural and mountainous districts of Uttarakhand. Tourists have a difficult time reaching specific places due to poor road connections, frequent landslides, and seasonal accessibility concerns. Additionally, it is difficult for micro, small, and medium-sized enterprises (MSMEs) to function properly. In addition, many regions are plagued by unstable energy, insufficient water supply, and poor digital connection, all of which have a direct impact on the quality of services that are provided by small companies such as homestays, transit operators, and local merchants. As a result of these infrastructure deficiencies, the operating expenses of micro, small, and medium-sized enterprises (MSMEs) in the tourist industry have increased.



Figure 1: Challenges In the Tourism-MSME Value Chain

2. Financial Barriers

Another significant obstacle is micro, small, and medium-sized enterprises (MSMEs) that are involved in tourism-related activities. Many small business owners have difficulty gaining access to formal loans because they do not have any collateral, their financial literacy is poor, or the banking processes are complicated. However, as a consequence of this, they often rely on unofficial sources of funding, which may be both expensive and unpredictable. Furthermore, the high cost of transportation and procurement in steep terrain helps to diminish profit margins, which makes it difficult for micro, small, and medium-sized enterprises (MSMEs) to maintain and develop their operations. This problem is made much worse by the fact that people are not aware of the many government programs and subsidies.

3. Market Access and Marketing Challenges

Due to weak marketing skills and limited exposure, micro, small, and medium-sized enterprises (MSMEs) in Uttarakhand often encounter challenges while attempting to penetrate wider markets. Especially when it comes to items such as handicrafts and organic foods, a significant number of local firms do not have adequate branding, packaging, and advertising plans. Additionally, their capacity to engage in online booking platforms, e-commerce, and digital marketing channels is hindered as a result of the poor adoption of digital technology. As a result of this digital gap, their ability to contact prospective clients beyond locals or seasonal visitors is restricted, which in turn restricts their chances for expansion.

4. Skill Gaps and Human Resource Issues

In the tourism–micro, small, and medium-sized enterprise (MSME) ecosystem, one persisting difficulty is the lack of competent people resources. A significant number of enterprise owners and employees do not possess professional training in hospitality management, customer service, and contemporary business methods. Because of this, the quality of the service is variable, and the happiness of the customers is decreased. In addition, the departure of young people from rural and hilly regions in search of better economic possibilities results in a shortage of the skilled labour force. Another factor that contributes to the widening of the talent gap is the lack of formal training programs and understanding of industry standards.

5. Environmental and Sustainability Concerns

Environmental challenges significantly impact the sustainability of the tourism–MSME value chain in Uttarakhand. Popular tourist destinations often experience overtourism, which places excessive pressure on natural resources, infrastructure, and local ecosystems. Poor waste management practices, deforestation,

and pollution contribute to environmental degradation, threatening the long-term viability of tourism. Additionally, the region is highly vulnerable to climate change, with increasing incidents of floods, landslides, and erratic weather patterns disrupting tourism activities and MSME operations.

6. Institutional and Policy Challenges

Institutional inefficiencies and policy-related issues also hinder the growth of MSMEs in the tourism sector. There is often a lack of coordination among various government departments, leading to fragmented policy implementation. Complex regulatory procedures, including licensing and compliance requirements, discourage small entrepreneurs from formalizing their businesses. Furthermore, limited access to institutional support such as training, mentorship, and advisory services reduces the ability of MSMEs to innovate and compete effectively.

Conclusion

The tourist industry has been a key contributor to the growth of micro, small, and medium-sized companies (MSMEs) in the state of Uttarakhand. When seen through the perspective of a value chain, it becomes abundantly evident that tourism not only results in immediate economic rewards, but also contributes to the development of local production systems and livelihoods. However, in order to ensure that the attempt will be successful in the long run, it is vital to find solutions to problems that exist in the areas of infrastructure, the environment, and institutions. The state of Uttarakhand has the potential to become a model for fair and sustainable regional development if it is able to successfully execute a value chain strategy that is effectively integrated.

References

1. Dangwal, M. (2023). Sustainable tourism in Uttarakhand: A blueprint for environmental conservation. *Himalayan Journal of Social Science & Humanities*, Pg. **41–48**.
2. Dinesh, S., & Agarwal, R. (2018). Sustainability and tourism policy in the Indian Himalayas: The Uttarakhand model. *International Journal of Tourism Development*, 13(2), Pg. **128–135**.
3. Frey, M., Smith, J., & Clark, L. (2019). Responsible innovation in tourism: A global perspective applied to Uttarakhand. *Journal of Tourism Innovation*, 8(1), Pg. **9–18**.
4. Gupta, P., & Bhattacharya, S. (2021). Public-private partnerships for sustainable tourism development in Uttarakhand. *Journal of Tourism Economics*, 19(2), Pg. **55–61**.

5. Kumar, A., & Mishra, N. (2019). Sustainable infrastructure development in tourism destinations: The case of Uttarakhand. *Journal of Sustainable Development, 26*(3), Pg. **205–213**.
6. Kumar, S., & Bhatt, M. (2021). Sustainable tourism in the Himalayas: Challenges and opportunities. *Journal of Mountain Tourism, 25*(2), Pg. **78–83**.
7. Pandey, R., Sharma, V., & Tyagi, M. (2020). Tourism and climate change in the Himalayas: The impact on Uttarakhand. *Himalayan Environment Journal, 14*(5), Pg. **118–124**.
8. Sharma, R. (2020). Eco-tourism development in Uttarakhand: Balancing economic growth and conservation. *Journal of Environmental Policy, 18*(4), Pg. **112–117**.
9. Sharma, R., & Singh, V. (2022). Tourism, biodiversity conservation, and sustainable development: A study of Uttarakhand's forest areas. *Biodiversity Conservation Journal, 11*(6), Pg. **70–78**.
10. Singh, A., & Choudhury, P. (2019). Tourism, ethics, and sustainability: Insights from Uttarakhand's religious tourism. *Journal of Ethical Tourism, 10*(3), Pg. **54–60**.
11. Singh, S., & Joshi, R. (2017). Community-based eco-tourism: A model for sustainable development in Uttarakhand. *Journal of Rural Development, 22*(4), Pg. **88–96**.
12. Thakur, D., & Bhardwaj, S. (2022). Managing tourist traffic in eco-sensitive zones: Insights from Uttarakhand. *Environmental Management Journal, 13*(3), Pg. **150–157**.